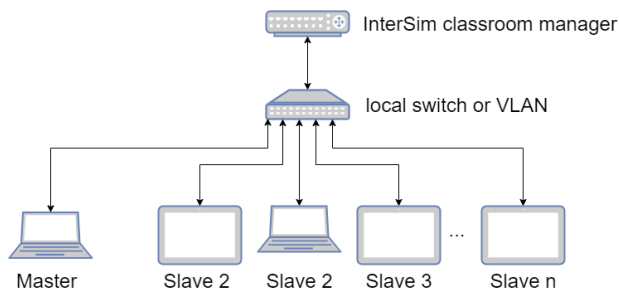


InterSim® III Classroom



Interactive Heart Simulator
Your virtual patient.



The InterSim® III devices (both InterSim® III Touch as well as the InterSim® III Interface) are able to be operated in a special master slave mode called classroom mode. In this mode a teacher or trainer operating the master device has the opportunity to set up special tasks for the students without showing them certain technical configuration. So the students have no unwanted hints during solving the task and are able to focus on their virtual patients. The classroom functionality is provided by the simulator software kernel controlling the simulator hardware.

SYSTEM REQUIREMENTS FOR MASTER

It is recommended to use an InterSim III Interface as master device.

The master PC, laptop or notebook has to meet the following minimum system requirements:

- 2 GHz clock frequency or higher (Intel i5/i7 or equivalent AMD)
- 4 GB RAM or higher
- USB 2.0 Hi-Speed port
- Microsoft Windows® 10 Pro or Enterprise (64 bit)
- At least 30 MB installation space (only for simulator software)
- Display device with a resolution of 1280x720 or higher ('True Color' or 'High Color')
- DirectX 10 (or above) installed
- Administrator privileges are required for installation (special port release)

The processor load depends on the slave quantity because of the varying database access. It is recommended not to run processor intensive tasks in parallel to the InterSim master application.

NETWORK CONNECTIONS

The preferable network connections are switched copper cabling based GBit Ethernet. The classroom has to be operated in a separated network segment. This can be assured by using a dedicated local switch device connecting exclusively all classroom devices or by a configuration using VLAN technology to provide a separated company network segment. Broadcasts should be allowed in the network segment.

Note: It is strongly recommended to disable Internet access.

DEVICES IN CLASSROOM NETWORK

InterSim III Touch devices have to be attached to network by using the docking station. InterSim III Interface requires a computer to operate the simulator software and control the interface. This computer provides connectivity to classroom network.

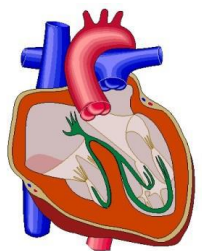
- ▶ InterSim III classroom manager
The classroom manager is a router device (Mikrotik hEX) providing the performance and special services needed to operate the classroom network. It also manages network addresses via DHCP for the classroom network.
- ▶ InterSim III Master Device
For InterSim III classroom master there is a special version of InterSim III simulator software required.
- ▶ InterSim III Slave Devices
Both available InterSim III variants are able to be operated in classroom slave mode. For slave mode, there are special configuration files available for InterSim III Touch and InterSim III Interface.


NETWORK PERFORMANCE

To obtain the required real-time performance of the simulation the network needs undisturbed traffic. Therefore the network has to be a separated segment. There should be no other network transfer (i.e. Email services, file download, OS update). Therefore we don't recommend the use of shared media network configuration such as WiFi.

Ingenieurbüro Lang
Dipl.-Ing. Lutz Lang
Hintere Dorfstraße 10
OT Seifersbach
09661 Rossau
Germany

www.intersim3.com



 InterSim® III is a joint venture product between Ingenieurbüro Lang and TQ-Systems GmbH. Production, sales and service for the product is carried out exclusively by TQ-Systems GmbH.

